

Ergo

LIGHTWEIGHT
Compact Open Gantry

SOLID-STATE
General Purpose Nuclear

PORTABLE
Point-of-care imaging

FLEXIBLE
Six collimator options



The Digirad Ergo is a portable, single-head, solid-state general-purpose nuclear medicine camera designed to offer maximum clinical versatility.

ERGO'S PURPOSE IS Multi-purpose



GENERAL NUCLEAR

Image patients on stretchers, sitting up, or even in wheelchairs.



PEDIATRICS

Image in tight spaces like pediatric patient areas and neonatal intensive care units.



SURGERY & TRAUMA

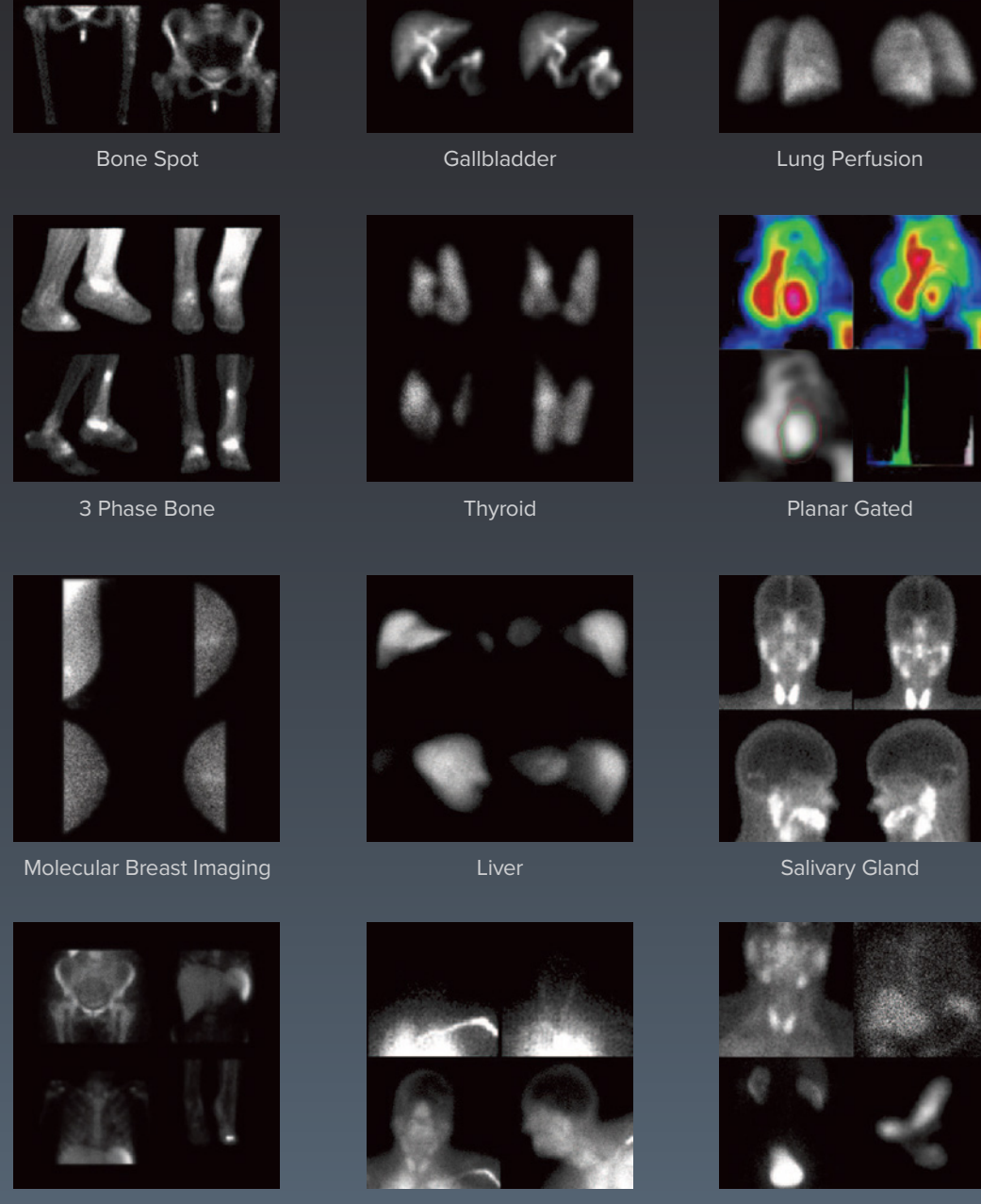
Image patients in the ICU, ER, OR, trauma units, or regular patient floors.



WOMEN'S HEALTH

Breast Imaging
Accessory enables state of the art MBI protocols.

Versatile IMAGING CAPABILITIES



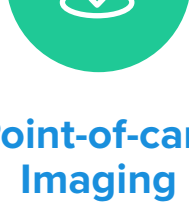
The heart of the Ergo is its large field-of-view (LFOV) detector. The system delivers an intrinsic spatial resolution of 3.25 mm, energy resolution of 7.9% and count rate capabilities greater than 5 Mcps.

Get to the Point.



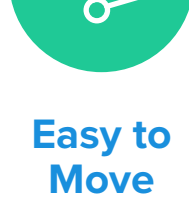
Small Footprint

29" wide and easily fits through doors



Point-of-care Imaging

Reduce the risks of patient transport



Easy to Move

Light and does not require a motor



Clinical Confidence

Image in the OR to confirm procedures

Ergo's portability allows you to deliver point-of-care imaging throughout your facility. With the Ergo you can expand the services you provide while improving patient care.



Switch Things Up

The Ergo features six high performance collimator options that provide outstanding imaging quality for a wide range of procedures. A quick-release latch mechanism makes changing collimators simple and fast.

LEAP

LEHR

MEAP

PINHOLE

DIVERGING

MBI

