

Introducing Mirage 2008 The ultimate processing and interpretation solution



mirage2008

PROCESSING, QUANTIFICATION & INTERPRETATION SOFTWARE

Mirage 2008 is Digirad's best-in-class processing and interpretation software that is designed specifically for nuclear medicine and nuclear cardiology. This automated application provides enhanced workflow by incorporating all necessary tools for the physicians and technologists in a simple and easy to use package. Mirage 2008 offers advanced and integrated connectivity solutions that allow you to work seamlessly with your existing equipments.

Mirage 2008 offers sophisticated iterative reconstruction algorithms, specialized filtering and validated quantification techniques that significantly improve image quality resulting in accurate diagnosis. This unique application provides a great value in SPECT quantification, like right ventricular ejection fraction, segmental-scoring, end-diastolic and end-systolic volumes, three dimensional Bulls eye's and upright normals database comparisons.

Mirage 2008 comes in two flexible configurations; complete reconstruction and processing or as a processing and review solution. Mirage 2008 software is available on desktop or laptop computers from Digirad or as software only configurations for use on existing hardware.

DIGIRAD[®]

COMPLETE SUITE OF NUCLEAR MEDICINE APPLICATIONS

- SPECT and Gated SPECT Reconstruction, Reorientation
- Gated Blood Pool Analysis (MUGA)
- First Pass and Shunt Analysis
- Renal Analysis (DTPA, MAG3, Hippuran, DMSA)
- Lung Processing (perfusion and ventilation)
- Thyroid Uptake and Parathyroid Analysis
- Gastric Emptying
- Gallbladder Analysis
- General Purpose Static and Dynamic Processing

STATE-OF-THE-ART CARDIAC SPECT SOFTWARE

- Automated Reconstruction, Reorientation and Interpretation
- Advanced Quantification and Interpretation
- 2D and 3D Bull's eye Displays with Open GL support
- Sector Analysis Report with Segment Scoring
- Comprehensive Amplitude and Phase Analysis
- Validated and Published Algorithms

UNIQUE AND COMPREHENSIVE TOOLS

- Bi-directional Workflow with Cardiomatching
- Integrated Upright Normals Database (UND)
- Ternary Colorscale in 2D Polar Plots
- Up to Three Dataset Reconstruction Capability
- OSEM, Iterative Reconstruction
- 1, 2 and 3-view Slice Display
- Database Parametric Results Files for Review

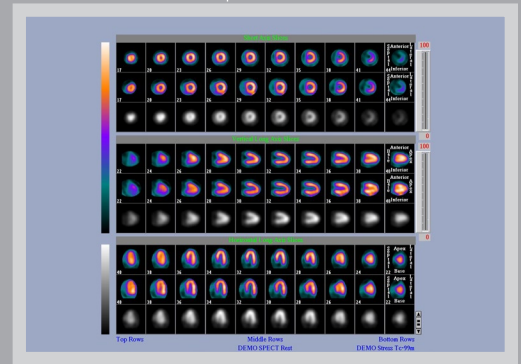
ADDITIONAL SOFTWARE & CONNECTIVITY SOLUTIONS

- Interfile 3.3 Import and Export Capability (standard)
- DICOM File Export Capability (standard)
- DICOM Import/Export Connectivity (optional)
- DICOM Server Capability (optional)
- nSPEEDSM; Digirad's 3D-OSEM Reconstruction (optional)
- Cedars QGS and QPS Interpretation Package (optional)
- Cedars Motion Correction Software (optional)
- State-of-the-art 4D-MSPECT Interpretation Package (optional)

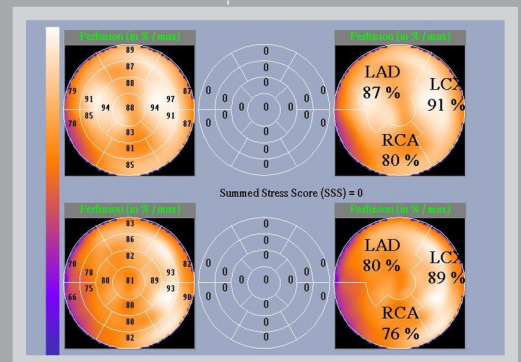
MIRAGE 2008 MINIMUM SYSTEM SPECIFICATIONS

HARDWARE	
CPU	Pentium 4 2,4 GHz
hard drive	80 GB free space
memory	DDR2 4200 533 MHz
drives	CD-R or CD-RW
peripheral interface	Parallel port or USB
graphics	DirectX 9.0 compatible video components capable to support the following configurations: Color resolution: 32 bit true color Screen resolution: 1280 x 1024
SOFTWARE	
OS	Microsoft Windows XP only
Office application	Microsoft Office Pro 2003

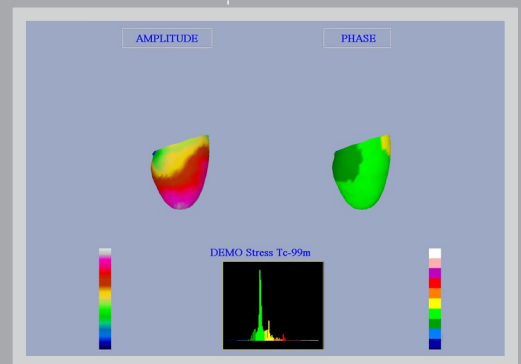
3-VIEW DISPLAY



SECTORIAL DISPLAY



3D FUNCTIONAL DISPLAY



2D POLAR COORDINATE DISPLAY

